

Valve Position Indicator



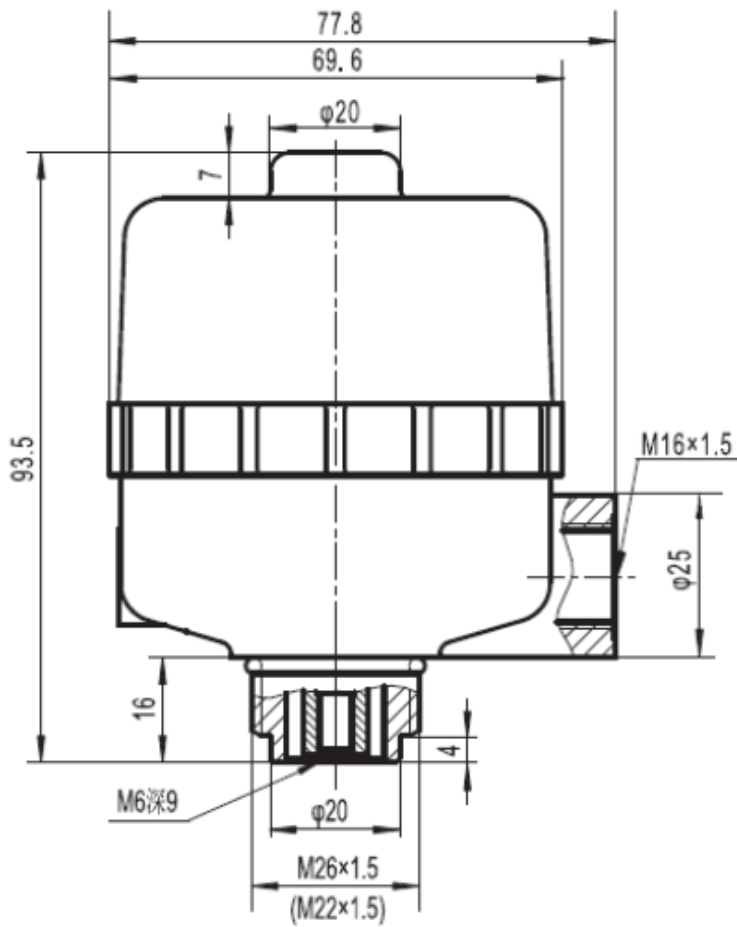
Direct return valve positioner can be rotated 360 ° directly installed on the valve, the valve position and its status can be reported to the upper system by Electric remote report. The built-in LED light emits optical position feedback.

- **Easy installation, can be installed on valves directly**
- **Cam Switches can change positions according to valve stroke**
- **The LED displays the readiness of the run and the position feedback**
- **Anti-splash water shell, compact and beautiful**
- **Can expand a variety of feedback signals**

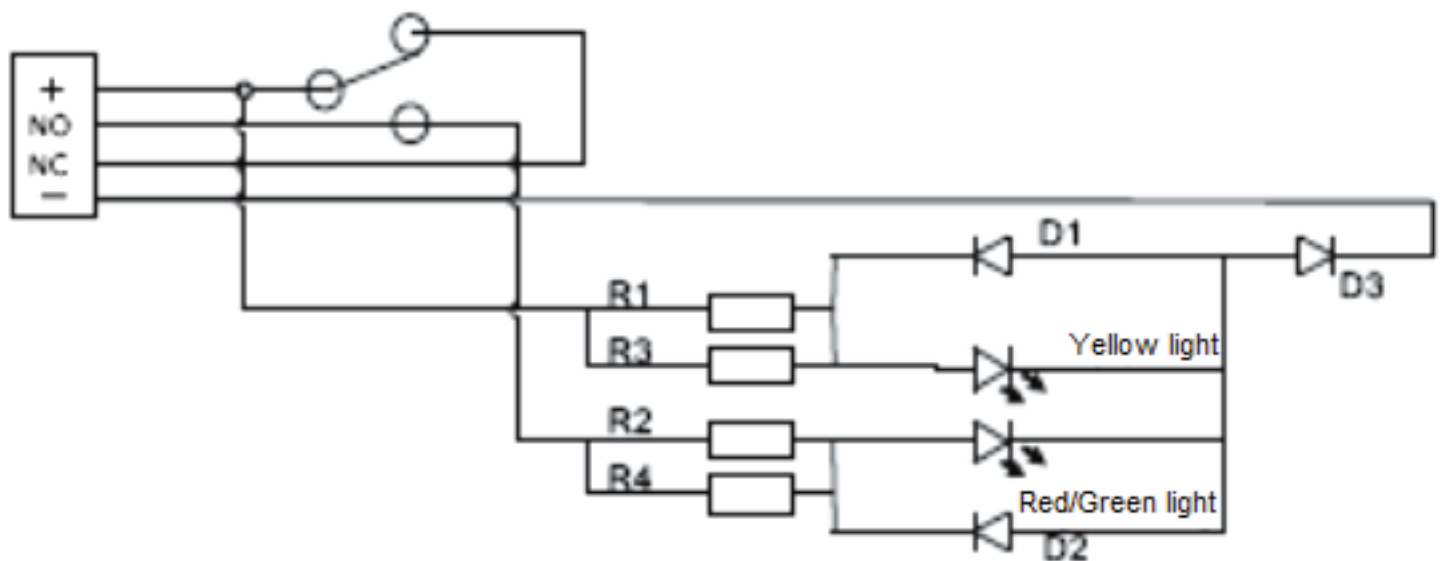
Technical data

Power supply	DC12V-48V
Power	DC12V-0.11W DC24V-0.45W DC48V-1.8W
Ambient temperature	-20°C-60°C
Installation	M26*1.5;M22*1.5
Cable interface	M16*1.5
Stroke control range	10-30MM

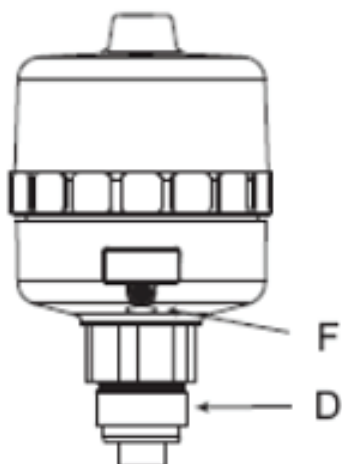
Dimension



Connection type



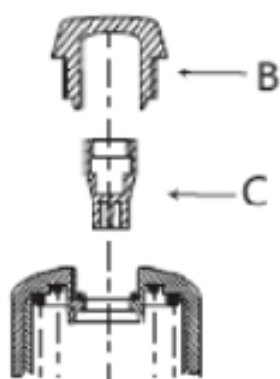
Installation



Loosen the screw F with a hexagonal wrench and remove the drive rod D.

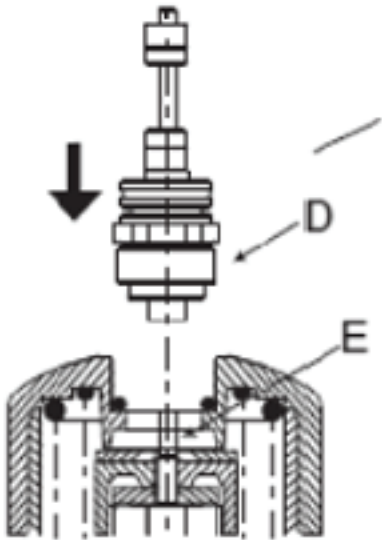
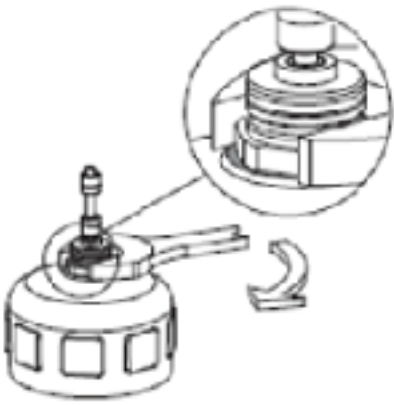


Check that the seal on the transmission rod is installed and in good condition and replace if necessary



Unscrew the clear cap B on the drive and indicate the C on the drive lever

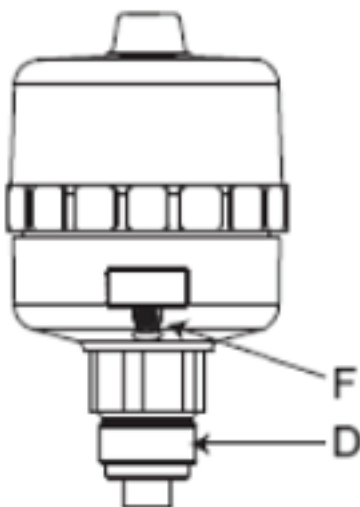
Installation

 <p>A technical line drawing showing a cross-section of a mechanical assembly. A drive bar, labeled 'D', is being lowered into a housing. A drive lever, labeled 'E', is visible within the housing. A downward arrow indicates the direction of movement for the drive bar.</p>	<p>Place drive bar D into the drive and screw threaded lock A onto drive lever E.</p>
 <p>A technical line drawing showing a cylindrical component with a drive rod. A wrench is shown tightening the drive rod. An inset circular view provides a magnified view of the drive rod and its connection point.</p>	<p>Use a wrench to tighten the drive rod to the top of the drive</p>

Installation



Tighten the drive rod and driver rod with a driver



Install the return sensor housing to the drive rod D, rotate the sensor housing, set the direction of the cable glands, and ensure that the electric shock signal is normal. Use the Allen wrench to tighten the fixing screw F

www.sealingsystems.gr